

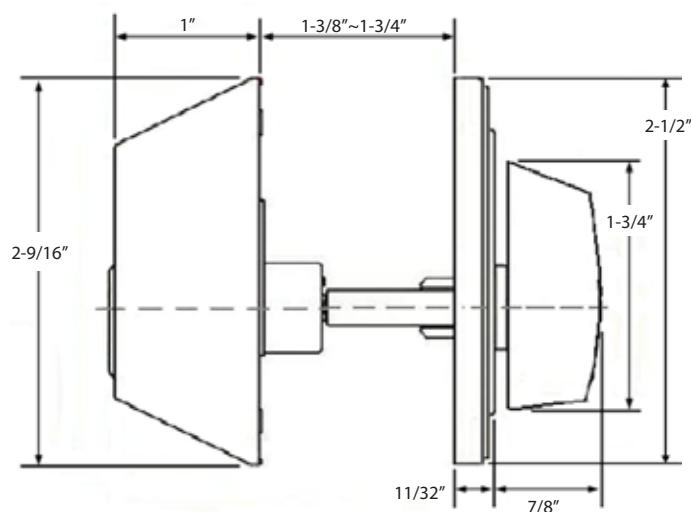
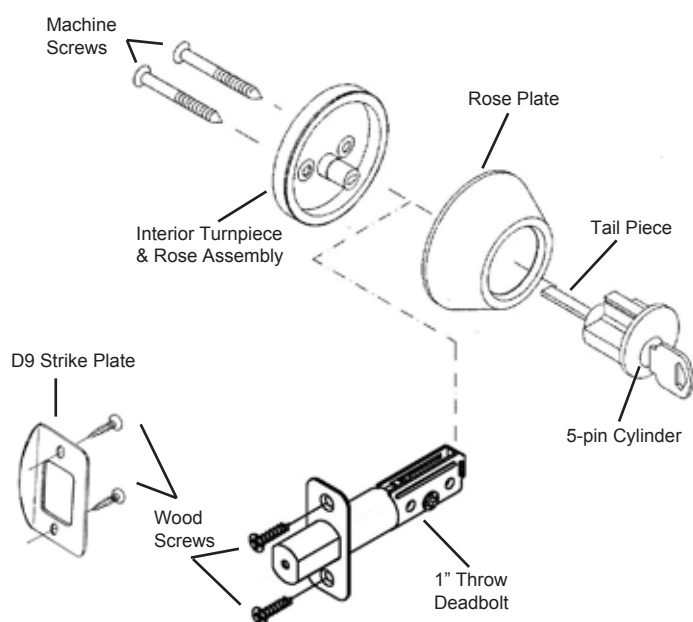
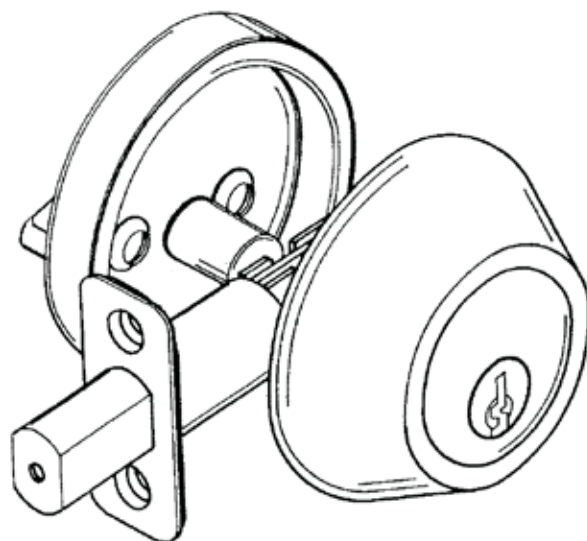
Specifications	
Door Prep.	Cross Bore: 2-1/8", Edge: 1"
Latch Backset	2-3/8" round corner deadbolt standard.
Door Thickness	Fits 1-3/8" to 1-3/4" door.
Cylinder	5-pin "KW" keyway solid brass cylinder.
Faceplate	1x2-1/4" round corner standard.
Strike Plate	2-1/4x1-3/4" full lip round corner standard.
Handing	Non-Handed
Bolt	1" throw
ANS/BHMA	A 156.2 Grade 3
Material	Zinc die-cast housing.

Function	Description
Single Cylinder	Bolt is operated by key from outside and turnpiece inside.
Double Cylinder	Bolt is operated by key on both sides.
One-Sided Deadbolt	Bolt is operated by turnpiece from inside only.
One-Sided Deadbolt w/ Cover-Plate	Bolt is operated by turnpiece from inside only. Outside cover plate only.

*Finish Availability - US 3, 5, 10B, 11P, 15, 15A, 19, 26, 32D

FD2

Single Cylinder



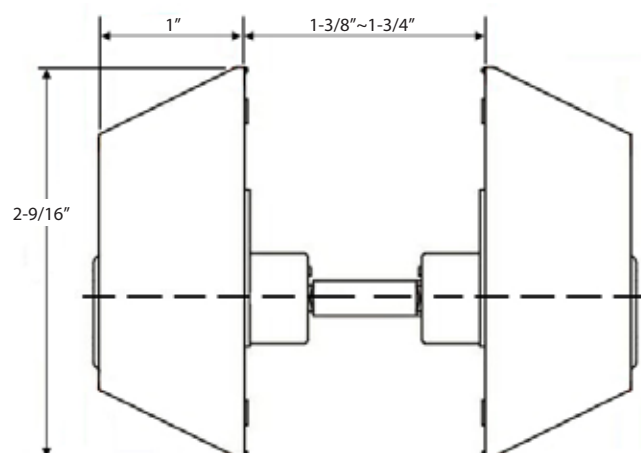
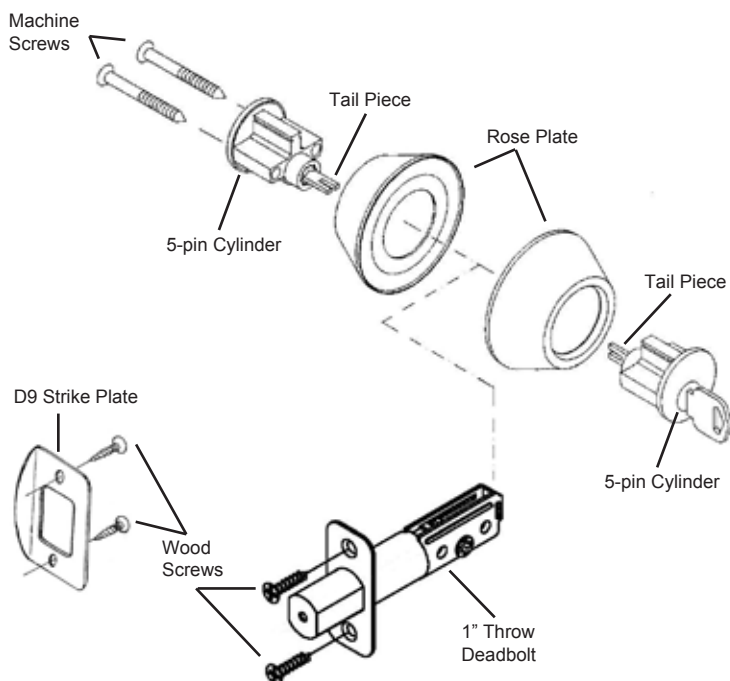
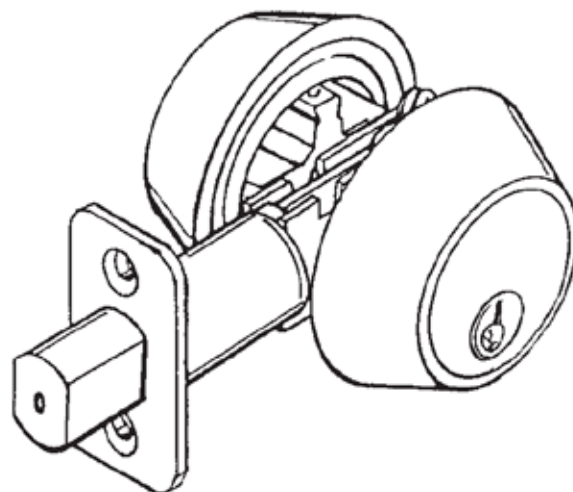
Specifications	
Door Prep.	Cross Bore: 2-1/8", Edge: 1"
Latch Backset	2-3/8" round corner deadbolt standard.
Door Thickness	Fits 1-3/8" to 1-3/4" door.
Cylinder	5-pin "KW" keyway solid brass cylinder.
Faceplate	1x2-1/4" round corner standard.
Strike Plate	2-1/4x1-3/4" full lip round corner standard.
Handing	Non-Handed
Bolt	1" throw
ANS/BHMA	A 156.2 Grade 3
Material	Zinc die-cast housing.

Function	Description
Single Cylinder	Bolt is operated by key from outside and turnpiece inside.
Double Cylinder	Bolt is operated by key on both sides.
One-Sided Deadbolt	Bolt is operated by turnpiece from inside only.
One-Sided Deadbolt w/ Cover-Plate	Bolt is operated by turnpiece from inside only. Outside cover plate only.

*Finish Availability - US 3, 5, 10B, 11P, 15, 15A, 19, 26, 32D

FD2

Double Cylinder



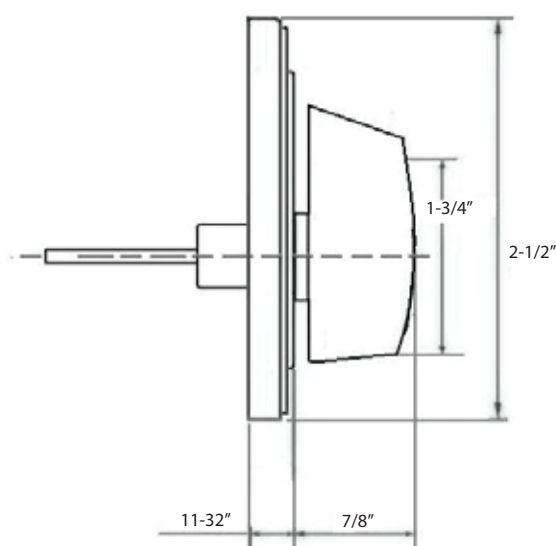
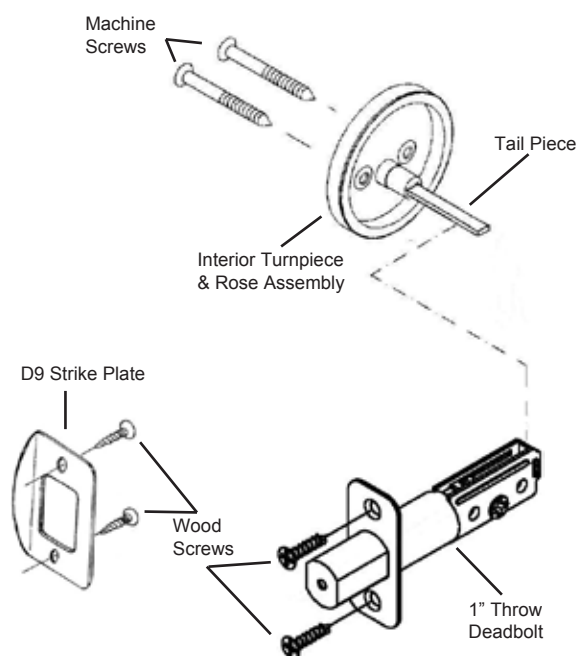
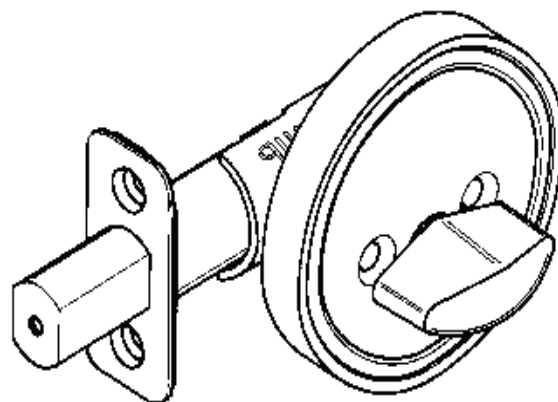
Specifications	
Door Prep.	Cross Bore: 2-1/8", Edge: 1"
Latch Backset	2-3/8" round corner deadbolt standard.
Door Thickness	Fits 1-3/8" to 1-3/4" door.
Cylinder	
Faceplate	1x2-1/4" round corner standard.
Strike Plate	2-1/4x1-3/4" full lip round corner standard.
Handing	Non-Handed
Bolt	1" throw
ANS/BHMA	A 156.2 Grade 3
Material	

Function	Description
Single Cylinder	Bolt is operated by key from outside and turnpiece inside.
Double Cylinder	Bolt is operated by key on both sides.
One-Sided Deadbolt	Bolt is operated by turnpiece from inside only.
One-Sided Deadbolt w/ Cover-Plate	Bolt is operated by turnpiece from inside only. Outside cover plate only.

*Finish Availability - US 3, 5, 10B, 11P, 15, 15A, 19, 26, 32D

FD2

One-Sided Deadbolt



Specifications	
Door Prep.	Cross Bore: 2-1/8", Edge: 1"
Latch Backset	2-3/8" round corner deadbolt standard.
Door Thickness	Fits 1-3/8" to 1-3/4" door.
Cylinder	
Faceplate	1x2-1/4" round corner standard.
Strike Plate	2-1/4x1-3/4" full lip round corner standard.
Handing	Non-Handed
Bolt	1" throw
ANS/BHMA	A 156.2 Grade 3
Material	

Function	Description
Single Cylinder	Bolt is operated by key from outside and turnpiece inside.
Double Cylinder	Bolt is operated by key on both sides.
One-Sided Deadbolt	Bolt is operated by turnpiece from inside only.
One-Sided Deadbolt w/ Cover-Plate	Bolt is operated by turnpiece from inside only. Outside cover plate only.

*Finish Availability - US 3, 5, 10B, 11P, 15, 15A, 19, 26, 32D

FD2

One-Sided Deadbolt w/ Cover

